



delivering solutions at any depth

# Skandi Skolten

vessel specification



# Skandi Skolten Construction Anchor Handling Vessel



The **Skandi Skolten** is a new generation high powered anchor handling vessel designed for field installation operations across a wide range of water depths and environmental conditions.

## Capabilities

The Skandi Skolten is a versatile multipurpose Construction Anchor Handling Vessel, ideally suited to deepwater mooring and field installation operations. Built to meet future environmental standards, the vessel is fuel efficient and clean class, thus having the capability to work in most of the world's offshore oil & gas precincts. At 108 m long, operating capabilities include a working moonpool, a 250 t Offshore Crane, "Safe Deck" manipulator crane system, an optional 350 t A-frame - a main winch capacity of 500 t and secondary of 170 t and a bollard pull of 350 t. The Skandi Skolten has an in-built Triton XLX work class ROV and a working deck area of 1,070 m<sup>2</sup>.

## General description

Name	Skandi Skolten
Type	AHTS Construction and Field Support Vessel
Owner	DOF Subsea
Class	DNV 1A1, SF, SUPPLY VESSEL, TUG, E0, DYNPOS-AUTR, (IMO DP II), Comf-V(3), CLEAN DESIGN, NAUT OSV, Helidk-SH, T-MON, DK(+), HL(2,8)
Flag	NIS
Year of build	2010



# Skandi Skolten Construction Anchor Handling Vessel

## Main Dimensions

Overall length	108 m
Length between pp	99 m
Breadth	24 m
Depth	9.8 m
Draft	7.8 m

## Cranes

Manufacturer	National Oilwell Varco (NOV)
Type	AHC Knuckleboom crane
Main hoist	250 t @ 13 m
Auxiliary hoist	20 t @ 40 m
Main and auxiliary hoist wire lengths	2,500 m
Deck Crane 1	3.0 t / 10 m - 1.5 t / 16 m
Deck Crane 2	20 t / 10 m - 10 t / 22 m
2 x Anchor handling (cargo rail) with manipulators (Safe Deck)	
A Frame (Optional)	350 t SWL

## Winches

### Main

1 x BRATTVAAG Water Fall triple drum (SL500W-3)

### Towing / working Drums - 500 t

1 x Declutchable towing drum  
1,500 mm Ø x 3,750 mm Ø x 4,100 mm length

1 x Declutchable working drum  
1,500 mm Ø x 3,750 mm Ø x 4,100 mm length

Wire capacity 6,700 m of Ø 76 mm each

### Anchor handling Drum - 500t

1 x Declutchable ah/wire drum  
3,500 mm Ø x 5,400 mm Ø x 8,200 mm length

With dividing flange socket part:  
18,700 m of Ø 76 mm wire

2 x BRATTVAAG Secondary winches  
170 t pull @ 0 - 23 m / min

### Additional

2 x Hydraulic windlass / mooring 20 t pull  
2 x Hydraulic tugger 24 t pull

## Deck Space

Main Deck Area 1,070 m<sup>2</sup> @ 10 t / m<sup>2</sup>  
Deck Material Timber  
Moonpool 7 m x 7 m  
Chain Locker 1,150 m<sup>3</sup>

## Speed

Maximum 17.5 knots  
Economic Transit 12 knots

## Helideck

21 m D-Rating (Sikorsky S92)

## DP System

Kongsberg K-POS DP21 (DP2)

### Reference Systems

1 x HIPAP 500

2 x DGPS

1 x Fanbeam

1 x Radius

### Additional Interface For:

Gyro, MRU, Wind, DGPS, Fanbeam, Radius, Winch Tension, ECDIS, Survey Computer

## Power & Propulsion

### Main Engines

2 x Wartsila I6V32 7,680 kW each

Bollard Pull 350 t

## Generators

Main 4 x Wartsila 8L26 2,600 kW each  
Harbour / Emergency 1 x Nogva 220 kW

## Diesel Propulsion Service

### Bow

3 x Wartsila Hybrid Propulsion 1 Retractable  
1,500 kW each

### Stern

2 x Wartsila Lips Tunnel 1,500 kW each  
2 x Wartsila Lips Tunnel 1,200 kW each

## Endurance

### Fuel Consumption

In Port 3 m<sup>3</sup> / 24 hrs  
Transit 23 m<sup>3</sup> / 24 hrs  
DP 8 m<sup>3</sup> / 24 hrs  
FW Making Capacity 30 m<sup>3</sup> / 24 hrs

## Capacities

Marine diesel oil 1,200 m<sup>3</sup>  
Fresh water 1,000 m<sup>3</sup>  
Ballast water 4,000 m<sup>3</sup>

## Accommodation

90 persons in 55 single/double cabins

## ROV (Integrated)

1 x Triton XLX Work Class

## Optional Equipment

Secondary Work Class ROV  
Observation Class ROV



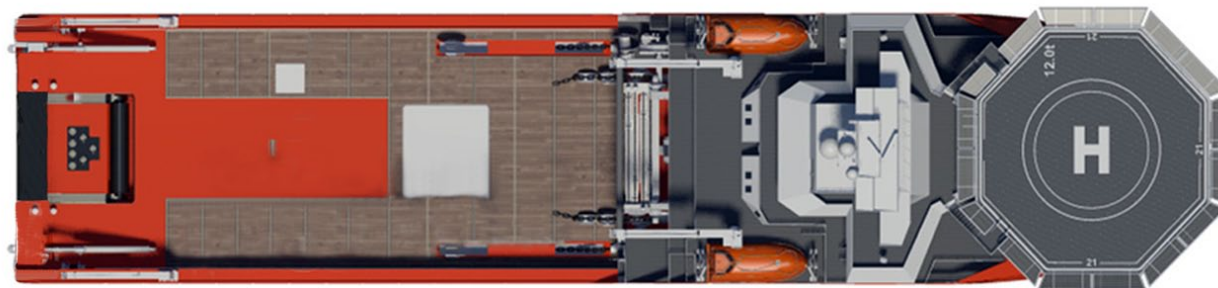


# Skandi Skolten Construction Anchor Handling Vessel



## General arrangement

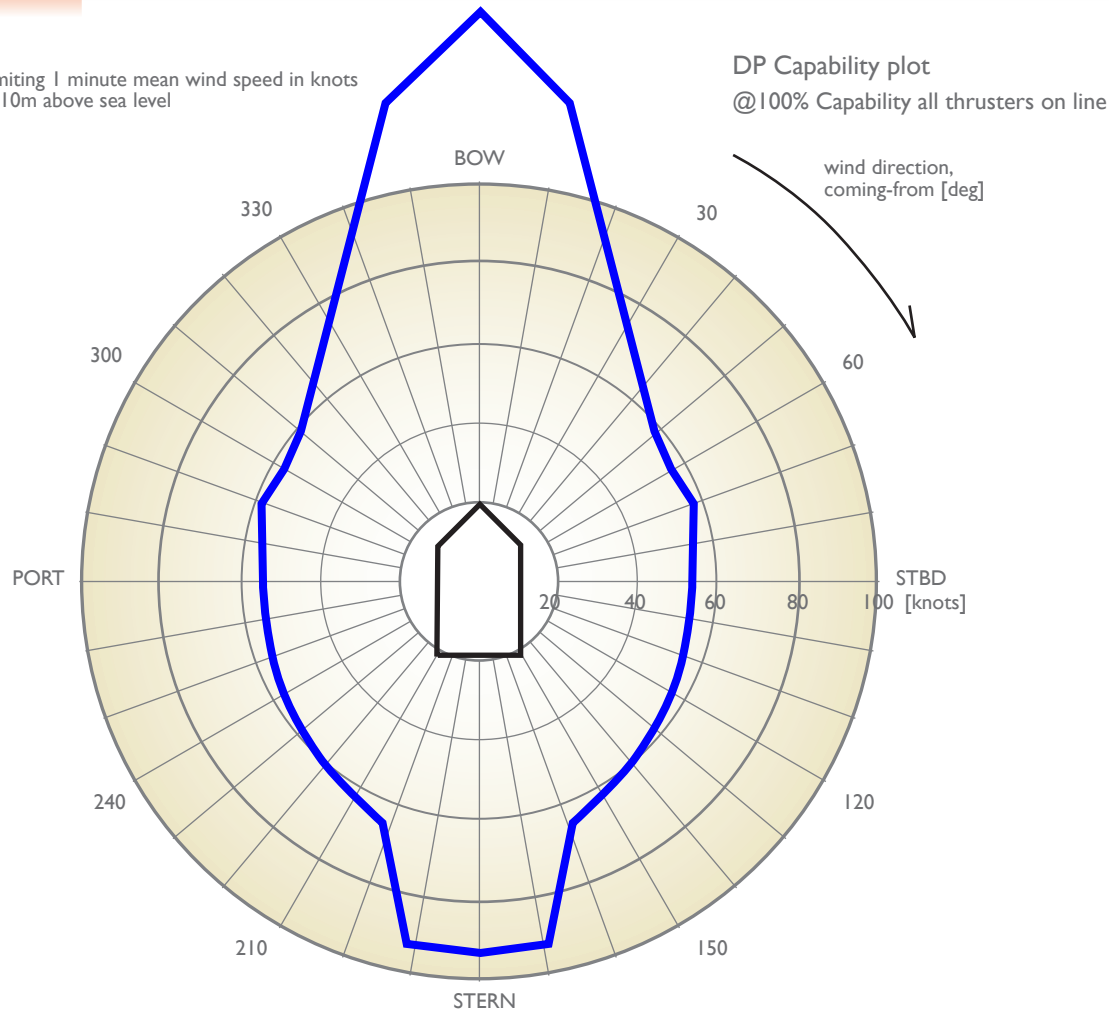
With 1070 m<sup>2</sup> main deck space, large work moonpool and sophisticated equipment for safe and efficient field development, including "Safe Deck" manipulator crane system, the Skandi Skolten is ideally suited to conduct deepwater construction installations.





# Skandi Skolten Construction Anchor Handling Vessel

Limiting 1 minute mean wind speed in knots  
at 10m above sea level



## Dynamic Positioning System

The vessel is fitted with a fully redundant Kongsberg K-Pos DP2 I dynamic positioning system.

There is one HiPAP 500, two satellite positioning systems (DGPS), a fanbeam and a Radius system.

wind speed:Automatic  
Significant wave height: DNV (ERN)  
Mean zero up-crossing period: DNV (ERN)

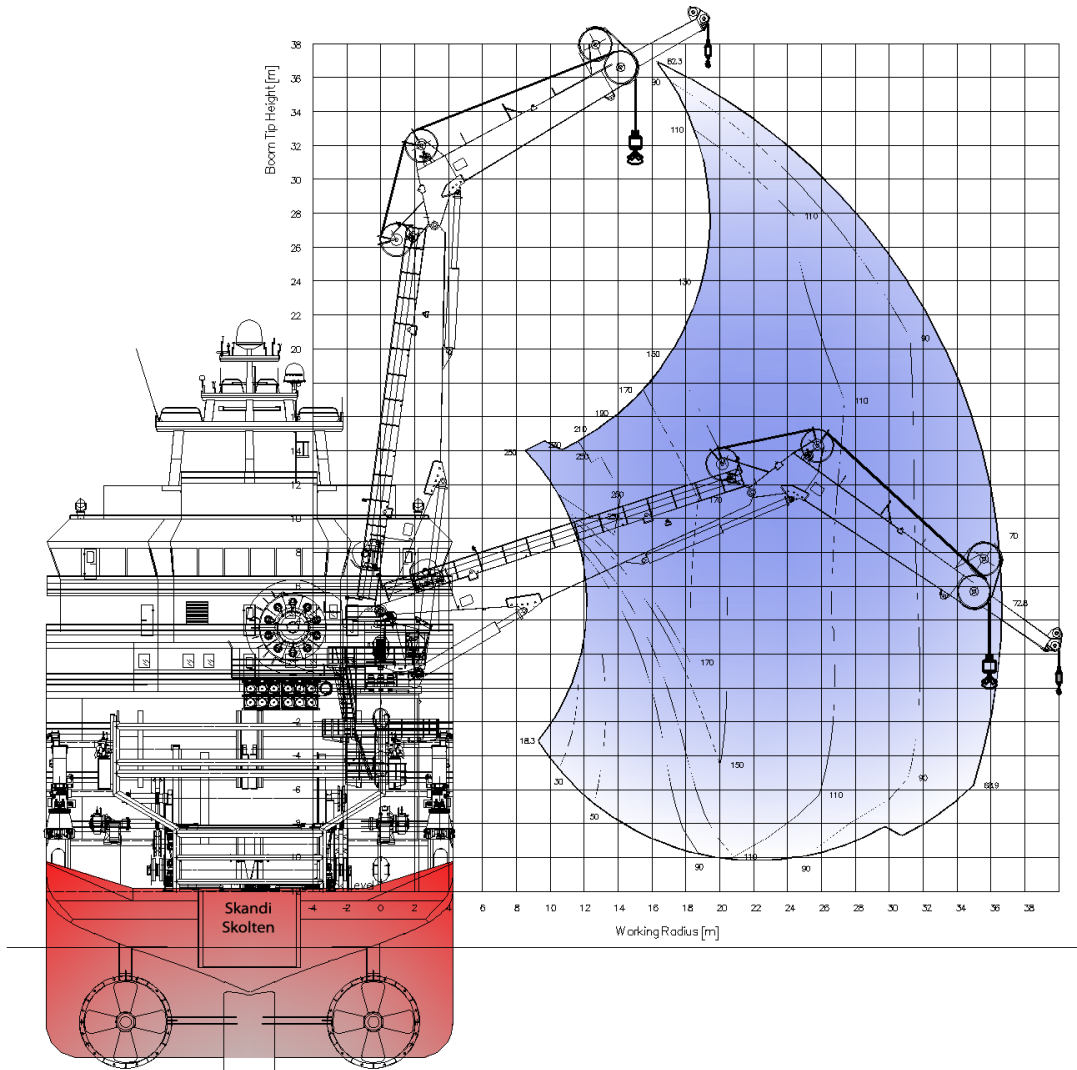
Rotating tidal current: 1.46 knots  
Rotating wind induced current: 0.000\* Uwi knots

[Home](#) [Intro](#) [Technical summary](#) [General Arrangement](#) **[Dynamic Positioning system](#)** [Cranage](#) [ROV](#) [Contact](#)





# Skandi Skolten Construction Anchor Handling Vessel



## Cranage capacities

The pedestal mounted active heave compensated knuckle boom crane is located on the starboard side of the main deck. It has a 250 t capacity at a radius of 13 m. The stern mounted A frame has a 350 t capacity.

There are two auxiliary cranes: one which can lift 20 t at a radius of 10 m, the other a small provision crane with a capacity of 3 t at 10 m radius. A small stores crane with a capacity of 3 t at 15 m radius is located above the ROV hangar on the starboard side of the vessel.



# Skandi Skolten Work Class ROV



## Triton XLX

The TRITON® XLX is a state of the art heavy duty work class ROV system, able to cope with the most demanding offshore applications. A wide range of modern tooling and sensors can be accommodated and it has been designed to allow prolonged and accurate operation.

### Capabilities

The ROV has a power unit rated at 150 HP with 4 horizontal and 4 vertical thrusters. The Thruster Control Manifold is equipped with 4 spare proportional valves and 2 spare Solenoid valves, and the tooling manifold is fitted with 5 spare proportional valves and 1 spare Solenoid valve. The ROV is fitted with Schilling T4 seven-function and Schilling Rigmaster five-function manipulators, 16 station proportional main manifold and 12 station proportional tooling manifold as standard. The survey junction box allows for the easy integration of all modern sensors, and additional cameras.

### General description

- Depth Rating 3,000 MSW
- Power 150 HP
- Payload Capacity 250 kg
- Through Frame Lift 3,000 kg
- Control Modes Heading, Depth, Altitude & Auto Position
- TMS Top Hat Design





# Triton XLX Work Class ROV

## Main dimensions

Length	3.22 m
Width	1.80 m
Height	1.95 m (2.15 m w/skid)
Depth Rating	3,000 m
Weight in Air	4.9 t approx.
Payload Capacity	250 kg
Under-slung	3,000 kg
Aft load Capacity	600 kg

## Propulsion/Speed

Power Pack (Shaft/HP)	150
Thruster Horizontal	4 x 380 mm
Thruster Vertical	4 x 300 mm
Forward Speed	3+ knots
Lateral Speed	2 knots
Heading Control	+/- 2.0 °
Pitch and roll control	+/- 5.0 °
Depth control	+/- 0.15 m
Altitude control	+/- 0.15 m

<b>Bollard Pull</b>	<b>(Nominal)</b>
Forward	1,100 kgf
Lateral	1,100 kgf
Vertical	900 kgf

## IHPU

Compensator volume (dirty pack)	6.5 L
Integrated Clutch Control	68 L/min @ 3,200 PSI

## Manipulators

- Schilling Titan 4 seven-function
- Schilling Rigmaster five-function

## TMS

Top-hat design, Type IV TMS	
Depth rating	4,000 m
Height	2 m
Diameter	1.8 m
Weight in air	1,950 kg
Tether capacity	440 m
Electrical Horsepower	10 HP

## Standard Sensors

<b>Depth</b>	
Type	Paroscientific
Model	DigiQuartz 8B 4000
Operating Range	4,000 m
Accuracy	0.01% FS
<b>Heading</b>	
Manufacturer	IRITECH
Model	IGC-IFG
Accuracy	2 °

<b>Pitch and Roll</b>	
Manufacturer	Watson
Model	AHRS-24
Accuracy	0.2 °

<b>Altimeter</b>	
Manufacturer	RDI
Model	Workhorse DVL
Frequency	1,200 KHz
Range	30 m

<b>Sonar</b>	
Manufacturer	Kongsberg
Model	MS1000

## Doppler (Auto Position Sensor)

Manufacturer	RDI
Model	Monitor Workhorse 1,200 kHz
Range	30 m

## Camera

Manufacturer	Kongsberg
Model	OE 15-102 Near SIT OE 14-366 Colour Zoom OE 1358 & 14-108 (mini)

## Light

Manufacturer	DeepSea Power & Light
Model	Sea Arc HID, Deep Multi Sealite

## Launch and Recovery System

Manufacturer	Sepro / Cetix
--------------	---------------

## LARS

SWL	19.5 t in water, 13 t in air
Outreach	5.5 m

## Winch

Cable capacity	3,500 m
Recovery speed	1.8 m/sec
Umbilical	3,500 m Ø 39.5 mm armoured
SWL	13 t Top Layer 19.5 t Bottom Layer

## Other

Separate Survey Pod Nexus Mux with dedicated single mode fibre for Multibeam and Ethernet capabilities

Specifications subject to change without prior notice







# Skandi Skolten Construction Anchor Handling Vessel



If you would like further information about DOF Subsea visit [www.dofsubsea.com](http://www.dofsubsea.com) or call one of our regional offices

Australia +61 8 9278 8700 | UK +44 1224 285 999 | USA +1713 896 2500 | Canada +1709 576 2033 | Singapore +65 6561 2780 | Brazil +55 22 2105 3700 | Norway +47 5525 2000

Home Intro Technical summary General Arrangement Dynamic Positioning System Cranage ROV **Contact**

